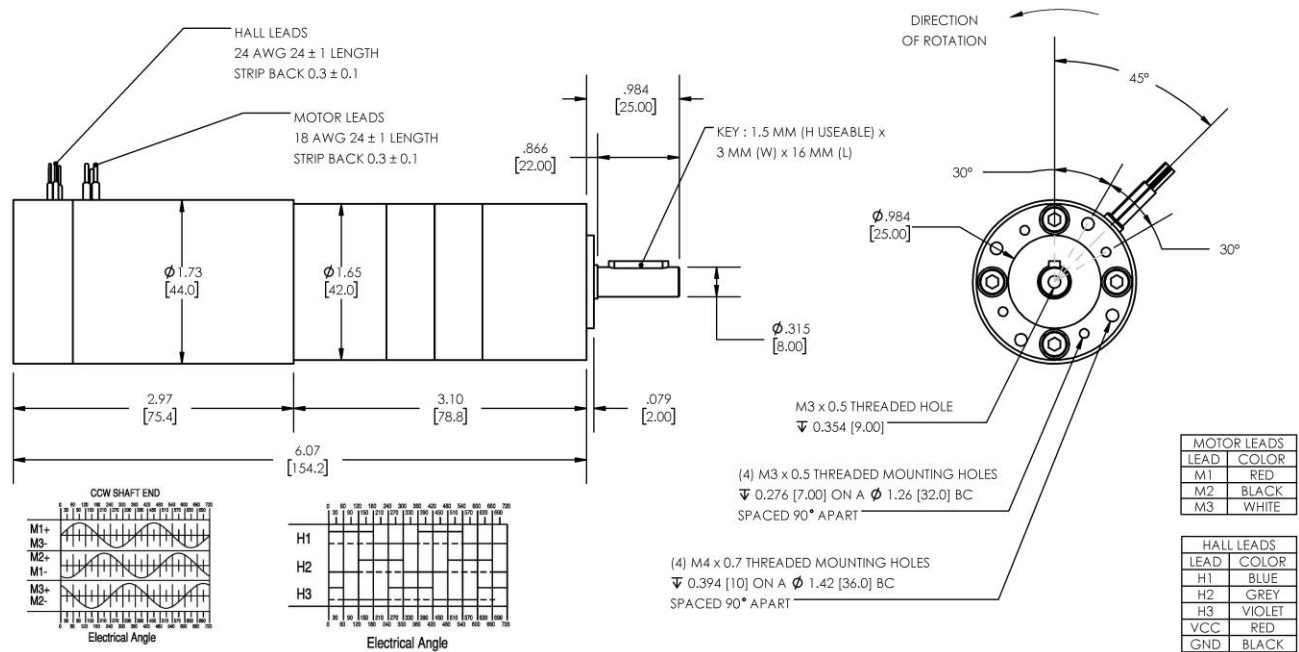


**Model Number:**

## MMP BL44-297E-48V GP42-029



DIMENSIONS ARE INCHES [MM] UNLESS OTHERWISE STATED

PLANETARY GEARMOTOR OUTPUT PARAMETERS:	VALUE	UNITS	TOLERANCE
Gearhead Ratio (exact)	28.93 : 1		
Gearhead Shaft Output Speed (at full-load)	155	RPM	MAX
Gearmotor Rated Continuous Torque	27	In-Lbs	MAX
Gearmotor Rated Peak Torque	<b>133++</b>	In-Lbs	----
Gearhead Standard Backlash	57	Arc Minutes	MAX
Gearhead Efficiency	75%	----	----
Output Shaft Radial Load Capacity	52	Lbs	MAX
Output Shaft Axial Load Capacity	18	Lbs	MAX
Gearmotor Total Weight	1.9	Lbs	MAX

**++ All Peak Torque values are dependent upon duty. Contact our sales office for details.**

DC MOTOR PERFORMANCE PARAMETERS:	VALUE	UNITS	TOLERANCE
Rated DC Voltage	48	DC VOLTS	----
Rated Continuous Current	1.7	AMPERES	----
No-Load Speed	5120	RPM	+/- 15%
Rated Speed	4483	RPM	+/- 15%
Rated Continuous Power Out	66	WATTS	+/- 15%
Rated Continuous Torque	20	OZ-IN	----
Peak Torque (motor only)	108	OZ-IN	----
No-Load Current	0.10	AMPERES	10%
Back EMF Constant (Ke)	9.3	V/KRPM	+/- 10%
Torque Constant (Kt)	12.5	OZ-IN/AMP	+/- 10%
DC Armature Resistance	3.70	OHMS	+/- 15%
Armature Inductance	2.67	mH	+/- 15%
Armature temperature	155	DEG. C	MAX

**NOTES:**

- ENCODER & BRAKE OPTIONS AVAILABLE – [FOLLOW THIS LINK FOR DETAILS](#)
- NEMA MOUNTING FLANGE OPTION AVAILABLE – [FOLLOW THIS LINK FOR DETAILS](#)

# MIDWEST MOTION PRODUCTS, INC

DESIGN, MANUFACTURING & DISTRIBUTION - MOTION CONTROL EQUIPMENT

[www.midwestmotion.com](http://www.midwestmotion.com)

email: [sales@midwestmotion.com](mailto:sales@midwestmotion.com)